

Viking/Viking Combi 40 - 400 l

Safe and reliable cooking kettle for cooking and mixing



metos
cooking solutions

Metos Cooking Solutions

Ahjonkaarre, FI-04220 Kerava, Finland

Tel. +358 204 3913

mcs@metos.com

mcs.metos.com



Standard features kettle without mixer

- Elevated control pillar with selected features
- Tilting height 600 mm
- Electric tilting 40-150 liter kettles, hydraulic tilting 200-400 liter kettles
- Measuring stick

Standard features kettle with mixer

- Kettle with integrated mixer
- Stepless mixing speed 15-120 rpm, autoreverse
- Two mixing programs
- Elevated control pillar with selected features
- Tilting height 600 mm
- Electric tilting 40-150 liter kettles, hydraulic tilting 200-400 liter kettles
- Safety grid lid
- Measuring stick

Options

- Frames for fixed installation (custom heights on request)
- Free standing kettles with feet
- Cooking bowl cover plates welded and seamless with closed cell polyurethane foam insulation
- Electric or steam heating
- Alternative operating voltages
- Food temperature display
- Automatic measured food water filling
- Manual or automatic cooling with tap water
- Steam jacket automatic fill
- Connection to external HACCP system
- Hand showers, Standard, Reel-in or Heavy Duty
- Draw off valves and taps

Materials

- Construction stainless steel (EN1.4301, EN1.4404)
- Inner surface acid proof stainless steel
- Protection class IPX5

Wide range of accessories available.

Volumes

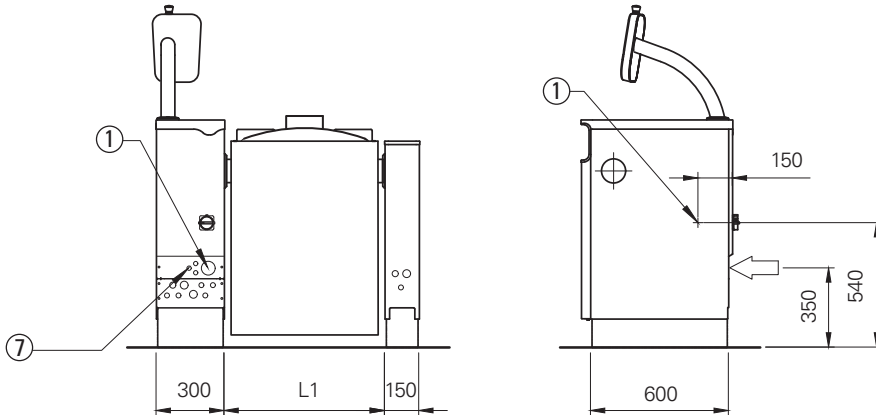
Viking Viking Combi	Brut L	Net L	Spare volume L
40	48	40	8
60	68	60	8
80	91	80	11
100	111	100	11
150	169	150	19
200	219	200	19
300	333	300	33
400	433	400	33

Heat load

Viking	Total kW	Viking Combi	Total kW	Sensible kW	Latent kW
40	9.0	40	11.5	2.4	0.4
60	10.5	60	12.5	2.6	0.6
80	12.0	80	14.0	3.4	0.8
100	16.0	100	18.0	3.4	0.8
150	20.0	150	23.6	4.3	1.0
200	30.0	200	33.6	6.1	1.4
300	40.0	300	43.6	9.6	1.9
400	57.2	400	62.0	11.5	2.1

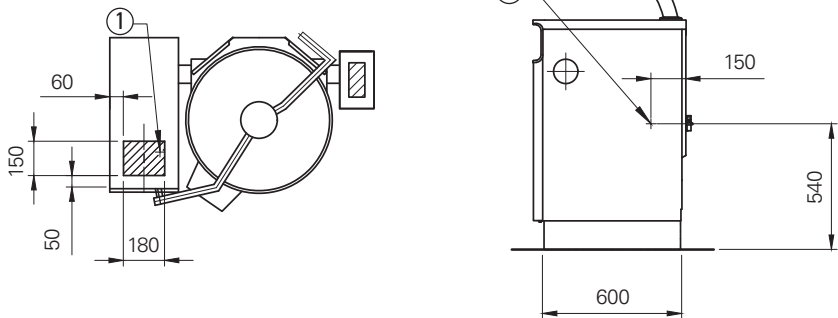
Viking/Viking Combi 40 - 400 litres

A. Electrical connections from rear

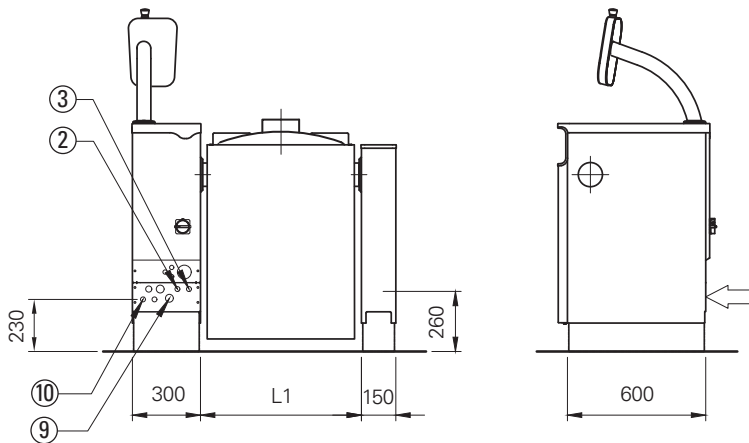


- 1. Electrical connection, PG21/PG36/PG48 gland
- 7. HACCP cabling (option)

B. Electrical connections from below

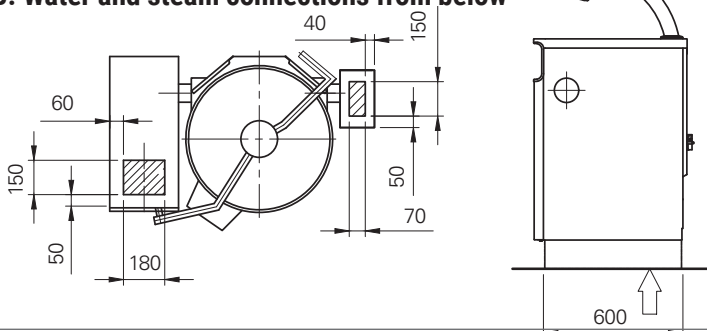


A. Water and steam connections from rear



- 2. Cold water connection R1/2" (ø15), to be fitted with non-return valve and shut off valve
- 3. Hot water connection R1/2" (ø15), to be fitted with non-return valve and shut off valve (option)
- 9. Steam connection R3/4" / R1" / R1 1/4" (option)
- 10. Condensate outlet R1/2" / R3/4" (option)

B. Water and steam connections from below



Viking/Viking Combi 40 - 400 litres

Electrical connections, ELECTRIC heated kettles

Viking	Connected power/kW	Current A	Fuse A	Viking Combi	Connected power/kW	Current A	Fuse A
40E	9.0	13	16	40E	11.5	22	25
60E	10.5	15	16	60E	12.5	24	25
80E	12.0	17	20	80E	14.0	26	32
100E	16.0	23	25	100E	18.0	32	32
150E	20.0	29	32	150E	23.6	45	50
200E	30.0	43	50	200E	33.6	59	63
300E	40.0	58	63	300E	43.6	74	80
400E	57.2	87	100	400E	62.0	97	100

3/N/PE AC 400/230V 50/60Hz

Electrical connections, STEAM heated kettles

Viking	Connected power/kW	Current A	Fuse A	Viking Combi	Connected power/kW	Current A	Fuse A
40S	0.2	1.7	16	40S	2.0	9	16
60S	0.2	1.7	16	60S	2.0	9	16
80S	0.2	1.7	16	80S	2.0	9	16
100S	0.2	1.7	16	100S	2.0	9	16
150S	0.2	1.7	16	150S	3.6	16	16
1/N/PE AC 230V 50/60Hz							
200S	0.2	1.7	16	200S	3.6	16	16
300S	0.8	2.3	16	300S	3.6	16	16
400S	0.8	2.3	16	400S	4.8	21	25

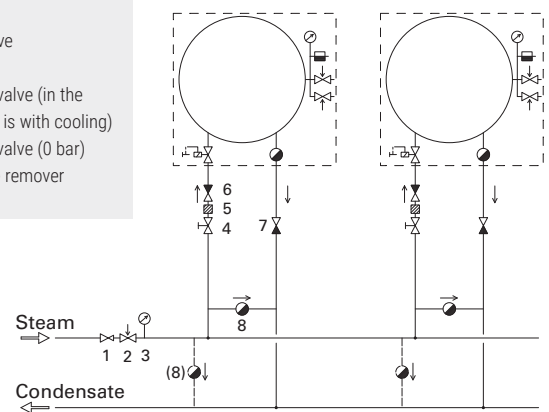
3/N/PE AC 400/230V 50/60Hz

Steam connection

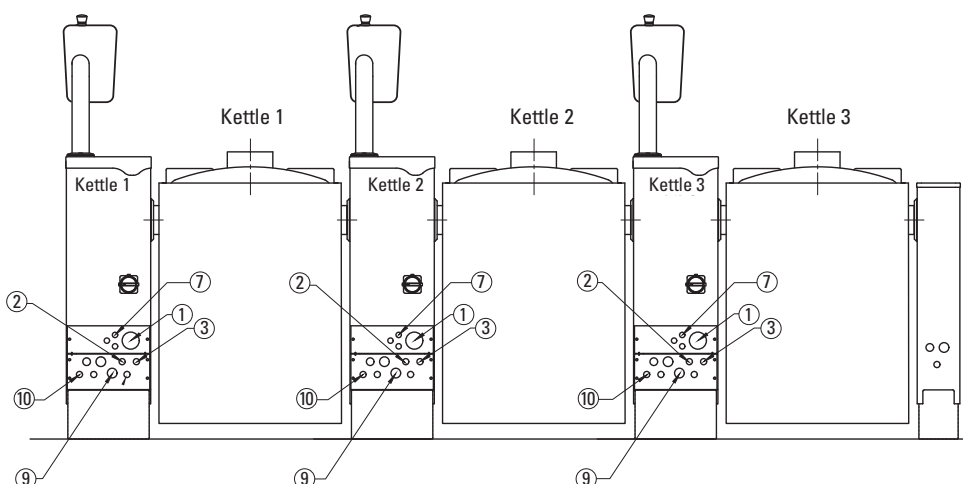
Viking	Connection		Outlet
40S	R3/4"	12 kg/h	R1/2"
60S	R3/4"	18 kg/h	R1/2"
80S	R3/4"	24 kg/h	R1/2"
100S	R1"	30 kg/h	R3/4"
150S	R1"	45 kg/h	R3/4"
200S	R1 1/4"	60 kg/h	R3/4"
300S	R1 1/4"	90 kg/h	R3/4"
400S	R1 1/4"	115 kg/h	R3/4"

Steam supply recommendations

1. Pressure reducing valve
2. Safety valve
3. Manometer
4. Shut off valve
5. Filter
6. Non-return valve (in the case device is with cooling)
7. Non-return valve (0 bar)
8. Condensate remover



Group installation connections

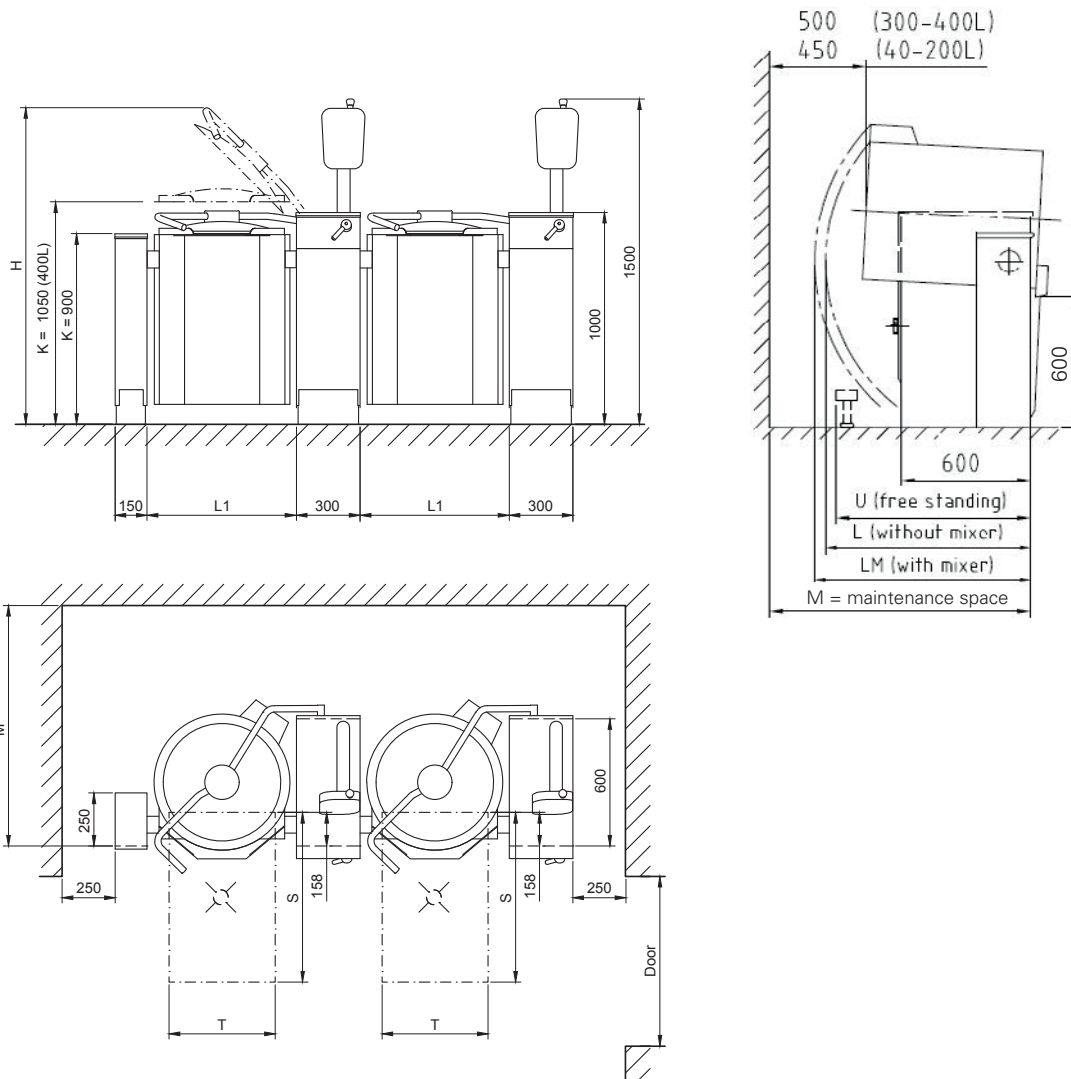


1. Electrical connection, PG21/PG36/PG48 gland
2. Cold water connection R1/2" (ø15), to be fitted with one way valve and shut off valve
3. Hot water connection R1/2" (ø15), to be fitted with one way valve and shut off valve (option)
7. HACCP cabling (option)
9. Steam connection R3/4" / R1" / R1 1/4" (option)
10. Condensate outlet R1/2" / R3/4" (option)

Viking/Viking Combi 40 - 400 litres



Dimensions



Floor mounted
Free standing

Viking basic
Viking combi
Proveno

	L1	H	K	L	LM	M	M1	E	D (FM)	D (FS)	N	V	S	T	U	KG	KG	KG
40E	594	1740	900	660	925	1055	1049	100	800	1000	600	608	800	400	860	155	195	200
60E	594	1740	900	755	1010	1180	1174	100	800	1000	600	608	800	400	860	165	205	210
80E	704	1745	900	860	1055	1235	1229	85	800	1000	600	718	800	500	890	185	225	230
100E	704	1745	900	860	1055	1235	1229	85	800	1000	600	718	800	500	890	210	260	265
150E	910	1945	900	960	960	1170	1164	110	1000	1250	600	924	800	600	1110	250	300	305
200E	910	1945	900	1035	1035	1285	1279	110	1000	1250	600	924	800	600	1110	290	340	345
300E	1110	2110	900	1280	1280	1320	1314	150	1200	1200	600	1124	1000	600	1010	350	410	415
400E	1110	2080	1050	1280	1280	1320	1314	150	1200	1200	600	1124	1200	600	1010	410	470	475

National and local regulations must be observed when installing the kettle.

an Ali Group Company



The Spirit of Excellence